

Subscribe

Share ▲

Past Issues

Translate ▼

Twitter

0

Short URL

<http://eepurl.com/h8ieuP>**FREE & ACCEPTED MASONS***A Legendary Brotherhood.*

Information Pack 12

Attire

Preface:

This document is not a "Dress Code" nor a requirement to adhere to a specific level of dress. This is to teach the historic norms that are prevalent in our fraternity. Dress is set at the lodge level (end of story) but the overwhelming view is - your Worshipful Master would rather you be in lodge in what you have on rather than not present at all.

Brother Mason,

Freemasonry can take you from (potentially) casual attire for casual meetings to study and practice ritual, to black tie, or even white tie functions with Indiana Grand Lodge. This guide was created to assist you in picking your, and your lady's, attire when no attire suggestion is given. Additionally, it is to stress the importance of picking an appropriate and clear level of dress if you are coordinating an event. From a stated meeting posted as a Facebook event to a ball with formal paper invitations, make sure to include "Recommended attire is...."

This can also serve as a handy guide to adhering to stated dress guidance.

Caveats:

- Military, Police, and Fire may substitute the appropriate dress uniform that matches the spirit of the occasion.
- In advance of Veterans Day 2006, the US Department of Veterans Affairs began to promote all military veterans to wear their medals and

Subscribe

Share ▲

Past Issues

Translate ▼

Twitter

0

Short URL

letter of this guide.

- If you only own a business suit, business casual, and casual wear follow this rule - Always dress up to the next level of attire you own.
- Most Masons will never need to own full formalwear. If you are attending a ball, please consider renting but remember these are not prom tuxedos. Rented formalwear should be black trousers, jacket, vest or cummerbund, and bow tie with a white tuxedo shirt.

Creating Your Wardrobe:

The order below is one approach to building a wardrobe ready for most occasions. This leaves out secondary clothing such as button-up shirts and polo shirts.

The first three will suffice for most men

- First - Dark Navy business suit
- Second - Business Formal leaning toward black suit
- Third - Lighter navy colored business suit
- Later - A black tuxedo (dinner coat)

MM Degree Nights (Business Formal)

The evening that a man is raised to the subline degree of a Master Mason is an evening to be celebrated. Adhere to the norms of your lodge, but the usual attire for this evening is Business Formal.

Business Formal:

- Dark Suit with optional vest
- White dress shirt
- Muted tie
- Leather shoe (Oxford, Derby, Monk Strap)

Subscribe

Share ▲

Past Issues

Translate ▼

Twitter

0

Short URL



EA & FC Degree Nights (Business Attire)

Degree nights are an important day in your lodge's candidate's life. Adhere to the norms of your lodge, but the usual attire for a degree night is Business.

Business:

- Suit
- White dress shirt
- Coordinating tie
- Leather shoe (Oxford, Derby, Monk Strap, Loafer)

Subscribe

Share ▲

Past Issues

Translate ▼

Twitter

0

Short URL



Stated Meeting Nights (Officer: Business Semi-Formal, Members: Dressy Casual)

While dress is more formal on degree nights, stated meeting nights offer an opportunity to relax your dress slightly. Even though there are no candidates to honor through your appearance, your dress on stated meeting nights represents your respect for the fraternity.

Business Semi-Formal (Officers:)

- Sport Coat
- Dress pants
- Dress shirt
- Coordinating tie
- Leather shoe (Oxford, Derby, Monk Strap, Loafer) or "nice" sneaker.

Subscribe

Share ▲

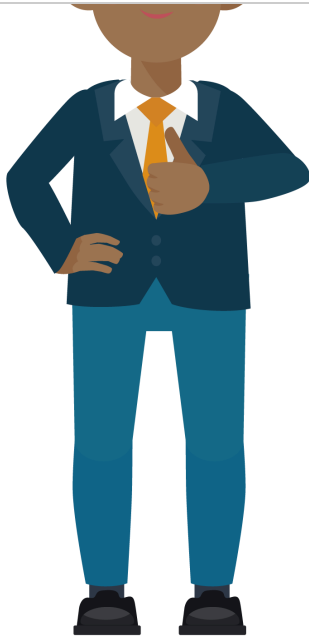
Past Issues

Translate ▼

Twitter

0

Short URL



Dressy Casual (Non-Officer Members:)

- Sport coat
- Dress pants or dressy jeans
- Collared shirt
- Leather shoe (Oxford, Derby, Monk Strap, Loafer) or "nice" sneaker.

Ritual Practice or informal meeting (Casual)

Don't confuse casual clothing with the "ultra casual" clothing you would wear around the house or "ath-leisure" that you would wear to the gym.

Casual

- Polo shirt or other collared shirts
- Chinos or nice jeans

Subscribe

Share ▲

Past Issues

Translate ▼

Twitter

0

Short URL



Other / Uncommon Levels of Masonic Dress

The following are less used, yet still encountered levels of dress that you may find throughout your Masonic travels. A fair bit of warning - any invitation that calls for any of these levels of dress may take preparation unless you have a full wardrobe of men's formal wear at your disposal... that fits.

Also included below are related dress for your +1's if they happen to be a lady. Brother - remember the statement around "due and timely notice?" This is a word of notice to you that your +1 will want as much lead time as possible. While menswear is fairly uniform in its approach to the event - ladieswear is not. Ladies have much more flexibility and creativity in their attire and other factors such as season and location have downstream effects that can boggle men's minds.

Black Tie Optional

A version of Black Tie that takes into account the wardrobe of most common-era men. In black tie optional, if you own a true black tie - wear that first, if not, the below is acceptable. Remember, if you don't own either of these, it is normal for a man to rent a tux, but remember to stick with black for everything except the shirt.

For Men:

Subscribe

Share ▲

Past Issues

Translate ▼

Twitter

0

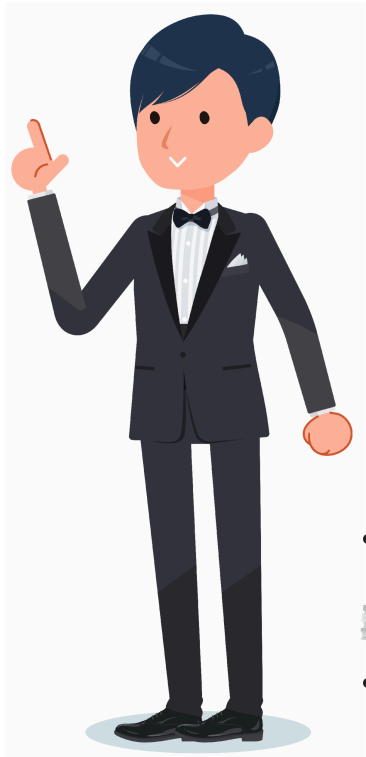
Short URL



- Black Socks.
- Highly polished black is preferred but matte black Oxford-style are fine.

For Ladies:

- A floor-length evening dress/gown, cocktail dress, or pantsuit that fits the occasion.



Black Tie

A step down from white tie, black tie is usually reserved for the most formal evening (ending after 7pm) events. However, it is not uncommon for Grand Lodge Officers to wear black tie during the day at specific events as a uniform including wearing a white tuxedo jacket in the winter (also reverse of custom.)

For Men:

- A black dinner jacket (without full tails) with silk/satin facing on either peaked lapels or a shawl collar.
- Matching black pants with a silk/stain accent running down the outer seam of the legs. No belt loops.
- A "tuxedo" shirt or a quality white dress shirt usually

with French cuffs.

- Black bow tie

Subscribe

Share ▲

Past Issues

Translate ▼

Twitter

0

Short URL

pumps.

For Ladies:

- A floor-length evening dress/gown, cocktail dress, or pantsuit that fits the occasion.



Creative Black Tie

Formal with a flair of fun - there is the opportunity to be formal in your appearance, but add items to the standard "uniform" attire that expresses you!

For Men:

- A tuxedo-style dinner jacket in classic black or a color with the flexibility to change the fabric (think velvet?)
- Matching pants usually with a silk/stain accent running down the outer seam of the legs.
- A quality dress shirt usually with French cuffs.
- Colored bow tie
- Matching cummerbund or vest
- Black Socks - or something more playful (just avoid white athletic socks)
- Highly polished black shoes - either Oxfords or leather court shoes/opera pump - or maybe a neat pair of sneakers.

For Ladies:

- Maintain the classic black tie silhouette but lean toward the concept of "red carpet" or get your picture snapped in front of the step and repeat. Think bright colors, sequence separates. Cocktail dress or pantsuit is more common than in strict black tie (though appropriate in both) and, of course, floor-length evening dress/gown.

Cocktail

Formal "lite"- this remains one of the most popular dress codes as it keeps it

Subscribe

Share ▲

Past Issues

Translate ▼

Twitter

0

Short URL

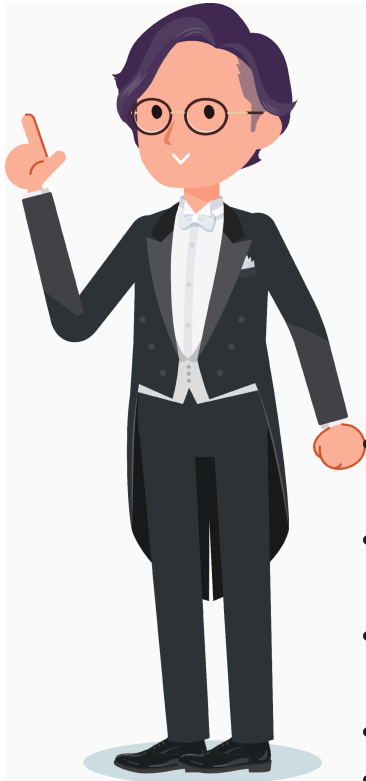


- A quality dress shirt.
- Dark tie ... or not.
- Black Socks - or something more playful (just avoid white athletic socks)
- Polished black shoes - or maybe a neat pair of sneakers.

For Ladies:

- Cocktail dress

The following are Uncommon in Freemasonry



White Tie

This is the highest, most formal level of dress and is reserved for events concluding after 6 pm. This is usually worn by Grand Lodge Officers at formal events as a distinguishing uniform or by men in public at "high society" weddings and state dinners.

For Men:

- A black/midnight blue tailcoat jacket with silk/satin lapel with color-coordinated pants
- White pocket square and optional carnation boutonniere
- White shirt with French Cuffs requiring stud closure and cuff links.
- White tie, vest, and optional gloves.
- Black Socks
- Black patent leather or court shoes/opera pump.

Subscribe

Share ▲

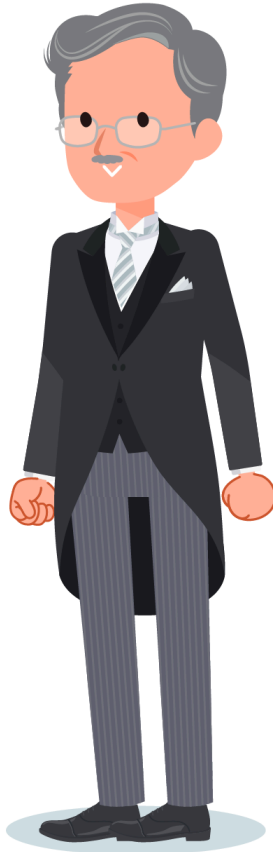
Past Issues

Translate ▼

Twitter

0

Short URL



Morning Dress (Formal Day Wear)

This almost non-existent level of dress in the US is men's formalwear for events concluding prior to the 6-7pm window when white tie becomes expected.

This outfit along with its semi-formal counterpart is absolutely stunning and designed to add the air of grandeur that seemingly falls apart when a man is seen in formal eveningwear in the daylight (mostly due to the monotone pallet of eveningwear.)

For Men:

- A morning coat (aka cutaway.)
- Gray or gray and black striped/checked trousers.
- Pocket square and optional carnation boutonniere
- White shirt, medium spread collar, French cuffs, and cuff links.
- Tie or cravat, vest, and optional gloves.
- Black Socks
- Polished (not patent) black leather shoes - Oxford

For Ladies:

- A dress or skirt with a jacket is appropriate for the activities for the day. Dresses are usually worn with a coordinating jacket, but this is not required
- Dresses should be conservative.
- A fascinator or other appropriate hat

Semi-Formal Day Wear

This outfit is the stepped-down little brother to the morning dress' cutaway jacket.

For Men:

- A stroller coat.
- Gray or gray and black striped/checked trousers.

Subscribe

Share ▲

Past Issues

Translate ▼

Twitter

0

Short URL



- Tie or cravat, vest, and optional gloves.
- Black Socks
- Polished (not patent) black leather shoes - Oxford

For Ladies:

- A dress or skirt with a jacket is appropriate for the activities for the day.
- Dresses should be conservative
- Usually worn with a coordinating jacket, but not required
- A fascinator or other appropriate hat is optional

Art of Manliness Website

Copyright © 2022 Grand Lodge of Indiana, Free and Accepted Masons, All rights reserved.

Want to change how you receive these emails?
You can update your preferences or unsubscribe from this list.

